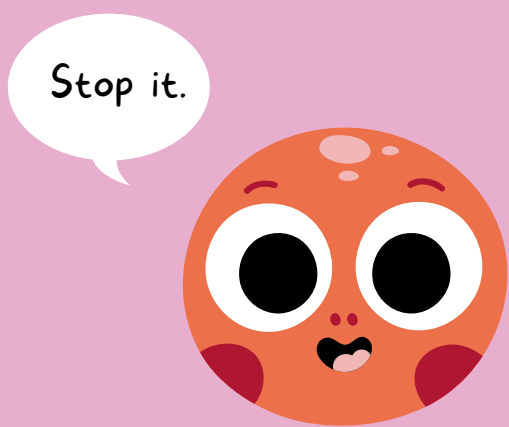


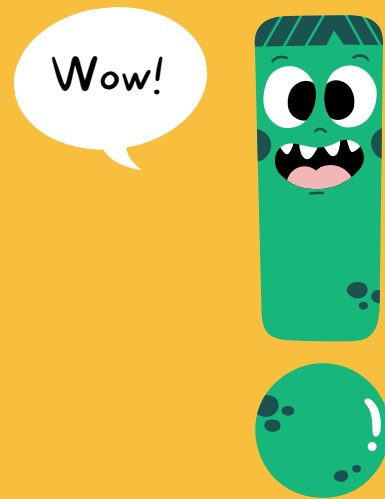
Punctuation In a nutshell

Period



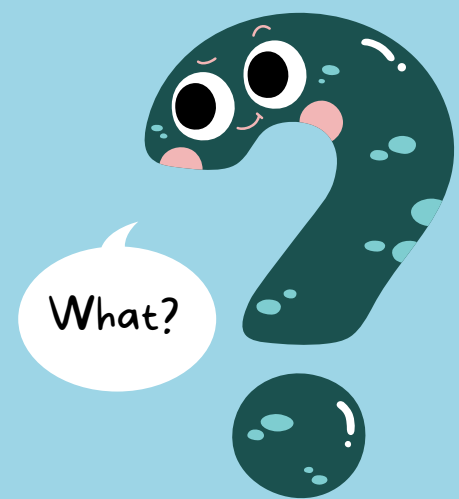
Used at the end of a statement

Exclamation Point



Used to show excitement or emphasis at the end of a sentence

Question Mark



Used at the end of a question

Comma



Used to separate phrases or items in a list

Semicolon



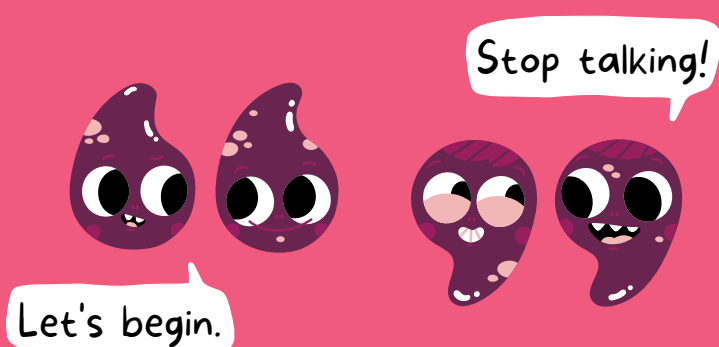
Used to join two independent clauses that are closely related

Ellipsis



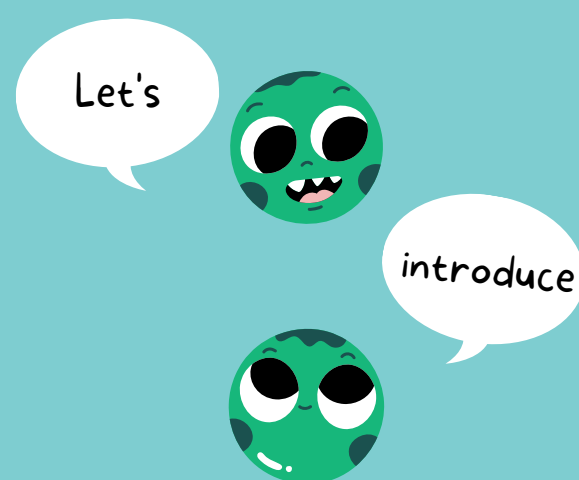
Used to indicate a pause or trailing off of a thought

Quotation Marks



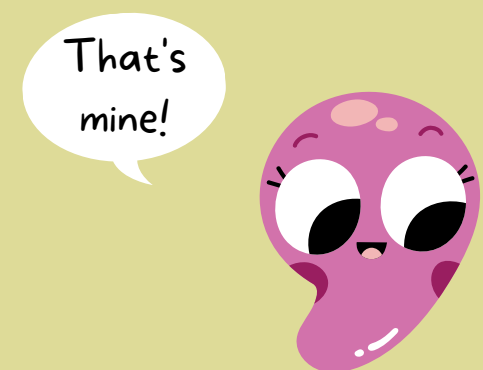
Used to mark the beginning and end of a quote or to show speech used in a sentence

Colon



Used to introduce groups of words in a series or introduce a quote

Apostrophe



Used to show possession